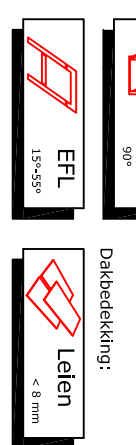
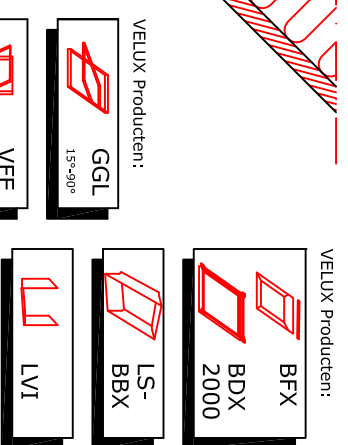
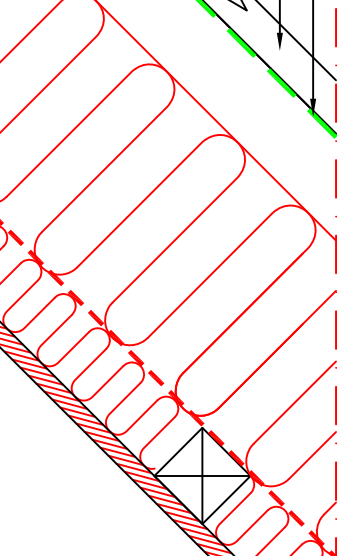
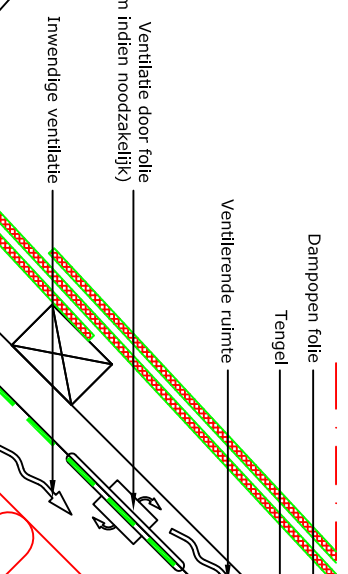
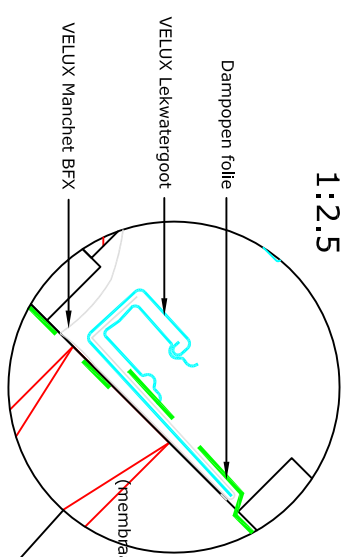
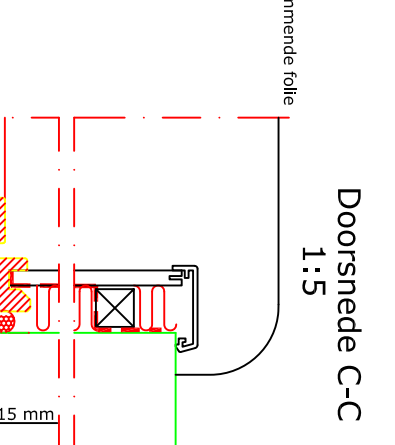
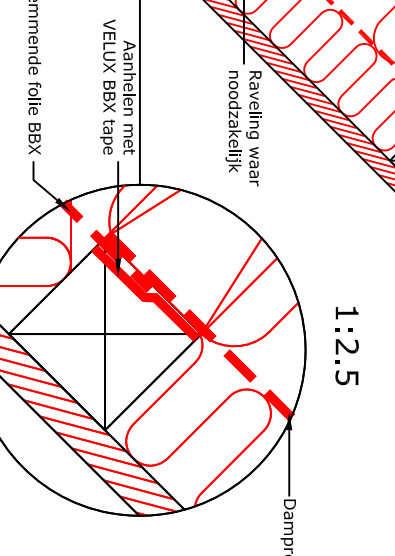
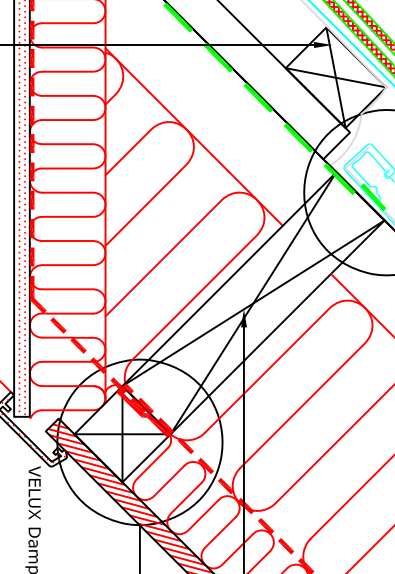
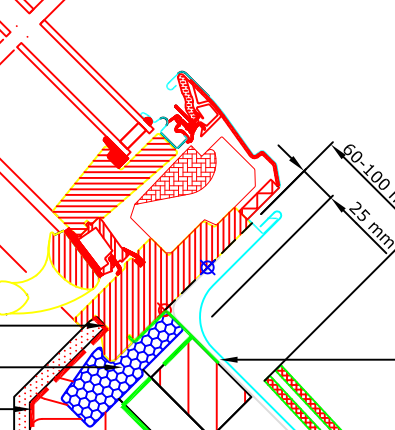


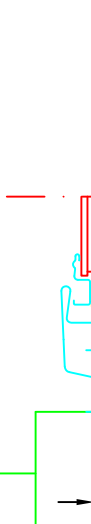
1:2.5



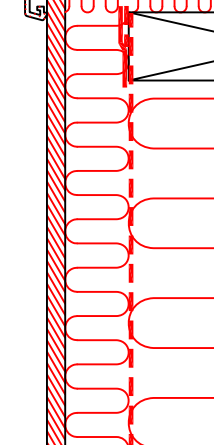
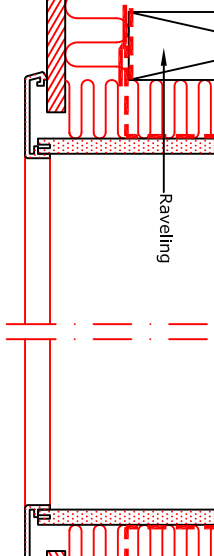
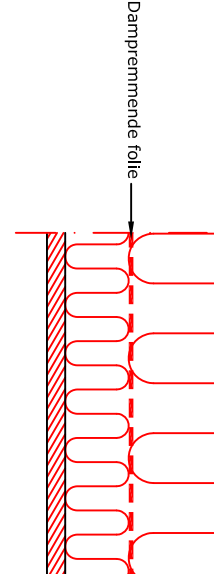
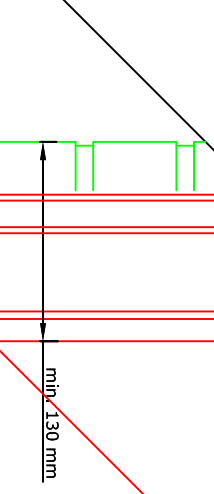
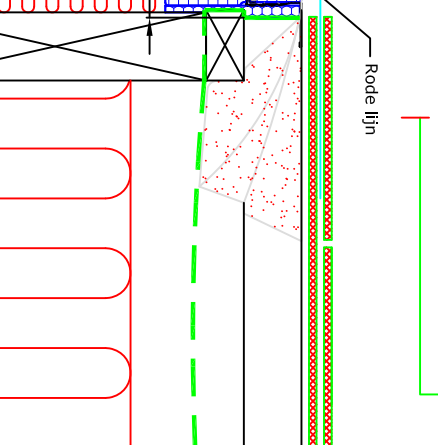
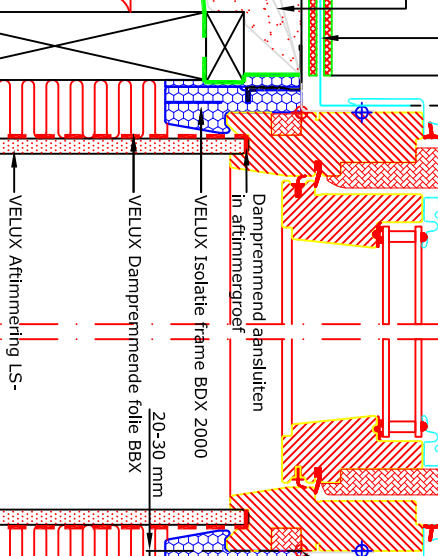
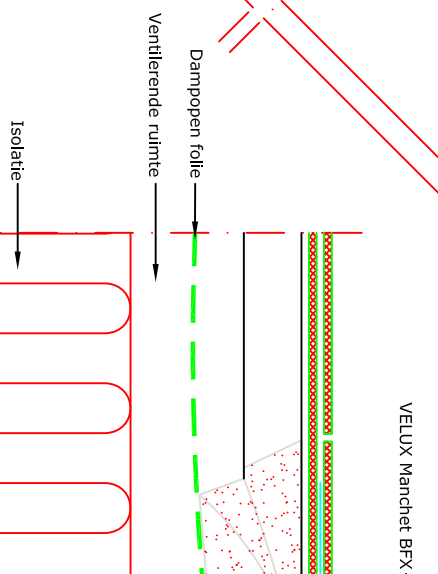
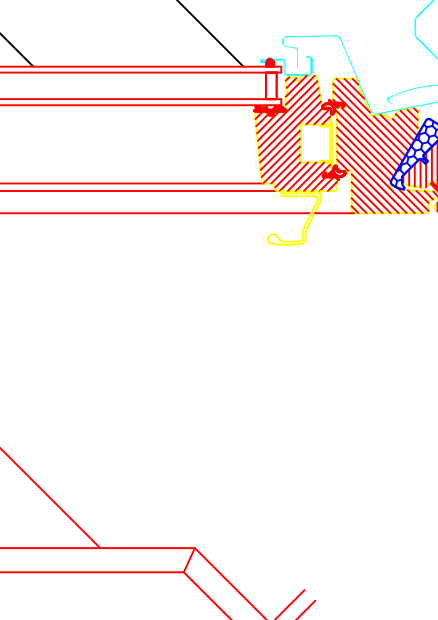
Doorsnede A-A
1:5



Doorsnede B-B
1:5



| 15°-55° | A mm | B mm |
|---------|------|------|
| 15 | 50 | 40 |
| 20 | 55 | 45 |
| 25 | 60 | 45 |
| 30 | 65 | 50 |
| 35 | 70 | 55 |
| 40 | 75 | 60 |
| 45 | 85 | 65 |
| 50 | 90 | 75 |
| 55 | 105 | 85 |



Let op:
De afgebeelde dakconstructie is slechts als richtlijn te beschouwen. Daarnaast dient de bestaande bouwregelgeving in acht worden genomen bij installatie van het VELUX dakraam.



© VELUX GROUP
VELUX, VELUX logo are registered trademarks

VELUX A/S



| | | | |
|---|-----------------------|----------------------------|-----------------|
| VELUX Dakraam GGL gemonteerd in Lelen met VFE | Date 19.12.12 | File name EFL+GGL+VFE-1212 | Drawing no. N11 |
| VELUX Isolatie frame BDx 2000 incl. manchet BFX | All measurement in mm | | |
| VELUX Gooistuk EFL, VELUX Aftrimming LS- + LVI | SCO | | |
| VELUX dampremmende folie BBX | | | |